



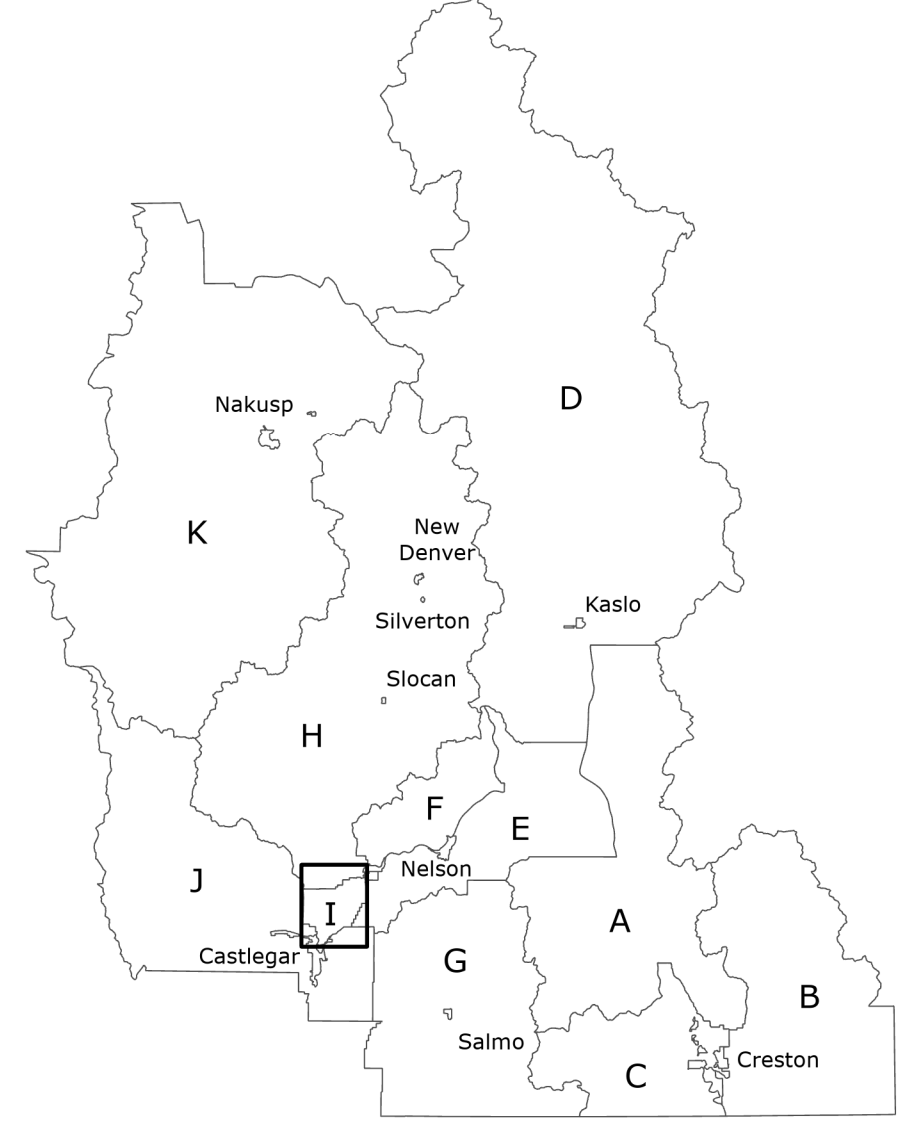
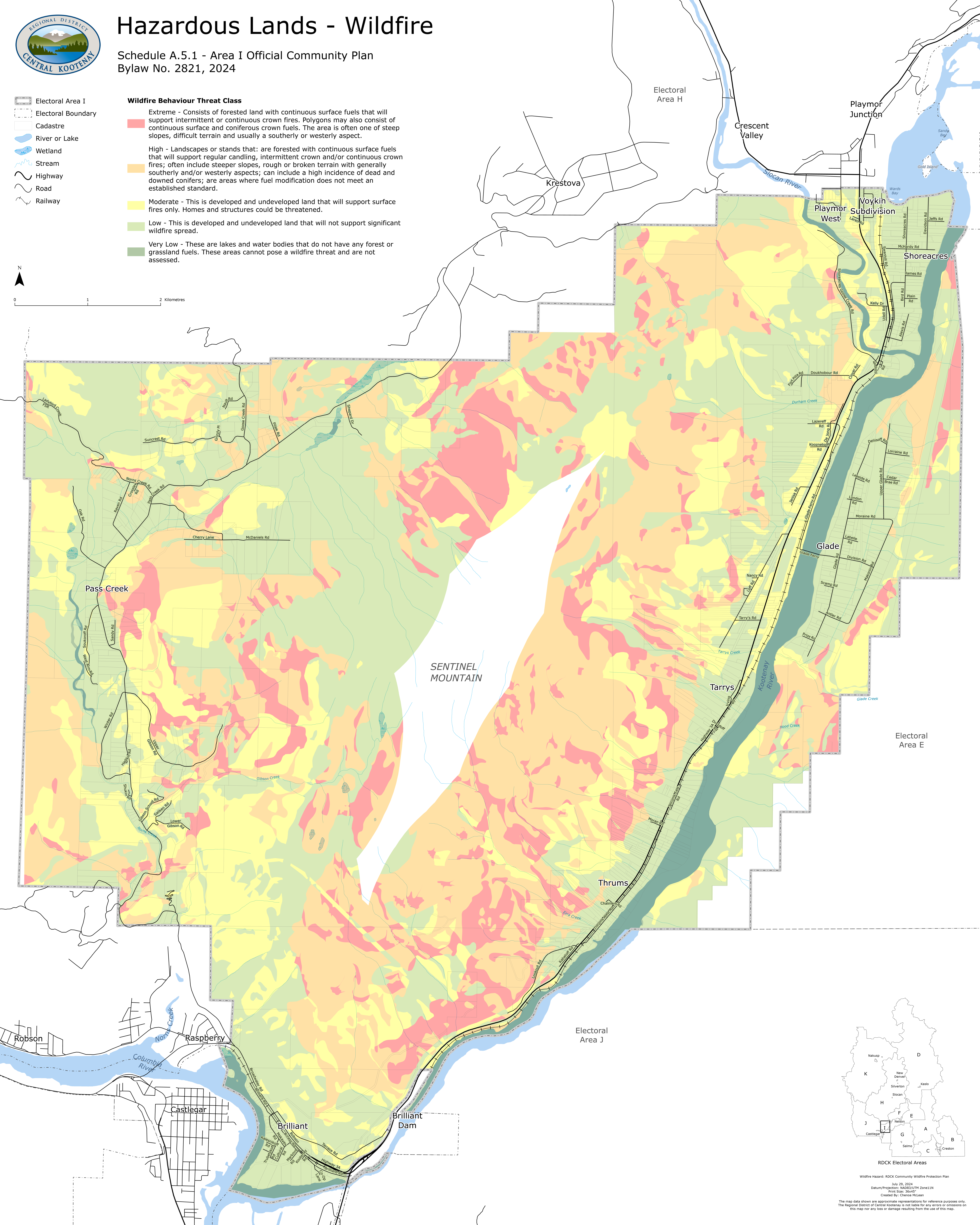
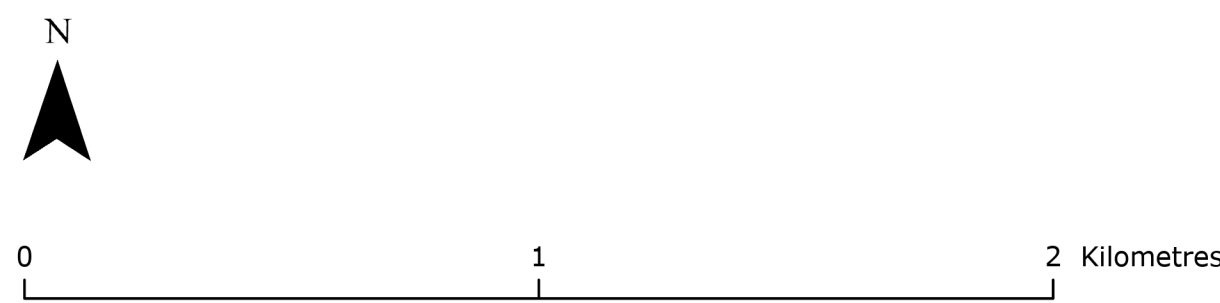
Hazardous Lands - Wildfire

Schedule A.5.1 - Area I Official Community Plan
Bylaw No. 2821, 2024

- Electoral Area I
- Electoral Boundary
- Cadastre
- River or Lake
- Wetland
- Stream
- Highway
- Road
- Railway

Wildfire Behaviour Threat Class

- Extreme** - Consists of forested land with continuous surface fuels that will support intermittent or continuous crown fires. Polygons may also consist of continuous surface and coniferous crown fuels. The area is often one of steep slopes, difficult terrain and usually a southerly or westerly aspect.
- High** - Landscapes or stands that: are forested with continuous surface fuels that will support regular candling, intermittent crown and/or continuous crown fires; often include steeper slopes, rough or broken terrain with generally southerly and/or westerly aspects; can include a high incidence of dead and downed conifers; are areas where fuel modification does not meet an established standard.
- Moderate** - This is developed and undeveloped land that will support surface fires only. Homes and structures could be threatened.
- Low** - This is developed and undeveloped land that will not support significant wildfire spread.
- Very Low** - These are lakes and water bodies that do not have any forest or grassland fuels. These areas cannot pose a wildfire threat and are not assessed.



Wildfire Hazard: RDCK Community Wildfire Protection Plan
 July 29, 2024
 Datum/Projection: NAD83/UTM Zone 11N
 Print Size: 36x45"
 Created By: Chelsea McLean

The map data shown are approximate representations for reference purposes only. The Regional District of Central Kootenay is not liable for any errors or omissions on this map nor any loss or damage resulting from the use of this map.